

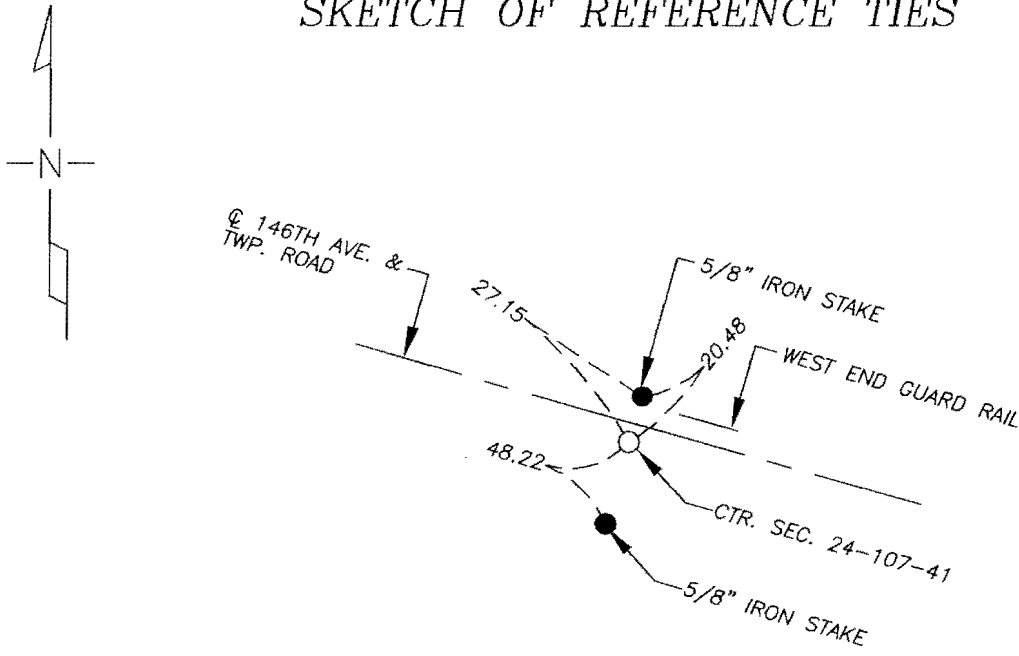
CERTIFICATE OF LOCATION OF GOVERNMENT CORNER

Center of Section 24, Township 107N, Range 41W, 5th P.M.
STATE OF MINNESOTA, County of Murray

At the corner location shown on the sketch

- On _____ found _____
- left monument as found lowered monument, removed monument (explain)
- On 10/06/08 placed a 1" Iron pipe with yellow plastic survey cap number 23008 at the intersection of 1/4 corners as per manual of Surveying Instructions 1973 U.S. Dept. of Int. B.L.M.

SKETCH OF REFERENCE TIES



CTR. SEC. COORDINATES
176664.94 N
514028.95 E
MURRAY COUNTY COORDINATES
NAD 83 (2007)

I hereby certify that this document and the data contained herein was prepared by me or under my direct supervision.

Perry L. Ziesbe 10-23-08
SIGNATURE DATE

MN. LICENSE NO. 23008

- Land Surveyor, Professional Engineer
 County Surveyor, County Engineer

OFFICE OF THE COUNTY RECORDER

I hereby certify that this document was filed in the Co. Recorder's Office at _____ on the _____ day of OCT 28 2008

County Recorder James V. Johnson
By _____, Deputy
DOCUMENT NO. _____